

Forest Master Log Lifter Manual



Model: FMLL



IMPORTANT: Read this manual fully before assembly and use and observe all safety rules and operating instructions



Thank you for purchasing the Forest Master Log Lifter. We hope you are 100% satisfied with your product but if you have any questions or queries, please do not hesitate to contact us:

Forest Master Ltd
Industry Road
Heaton
Newcastle Upon Tyne
NE6 5XB

Sales Tel: +44 (0)191 265 5000
Email: info@forest-master.com
Website: www.forest-master.com
Technical Enquiries Tel: +44 (0)191 276 6553

About Your Product

The FMLL is a log lifter that is capable of lifting large logs fully from the ground in order to cut down with a chainsaw. It has two adjoining jacks which should be placed in the middle of the log to lift the entire log off the ground, as opposed to a standard log jack that only lifts one end.

Max Log Diameter: 500mm

DO NOT attempt to lift a log that is too heavy – this could cause serious injury. Only use the FMLL for manageable logs.

Please thoroughly read the safety instructions and guidelines and make sure you are familiar with them before use.

Specifications

Length	1750mm
Retracted Length	965mm
Width	960mm
Weight	11kg



Contents	Page No.
Assembly	4
Safety Instructions	8
Operation	9
Exploded Diagram	12
Parts List	13
Warranty	14
Updates	15



Assembly Parts	Part Number(s)	Qty.
Lower Frame	1-4 Pre-Assembled	2
Sliding Support Spike	5	2
M8 Thumbscrew	6	4
Log Hook and Collar	7-11 Pre-Assembled	2
Extending Frame	12	2
M8 x 45 Bolt	13	2
M8 Nut	11	2
Handle	14	1

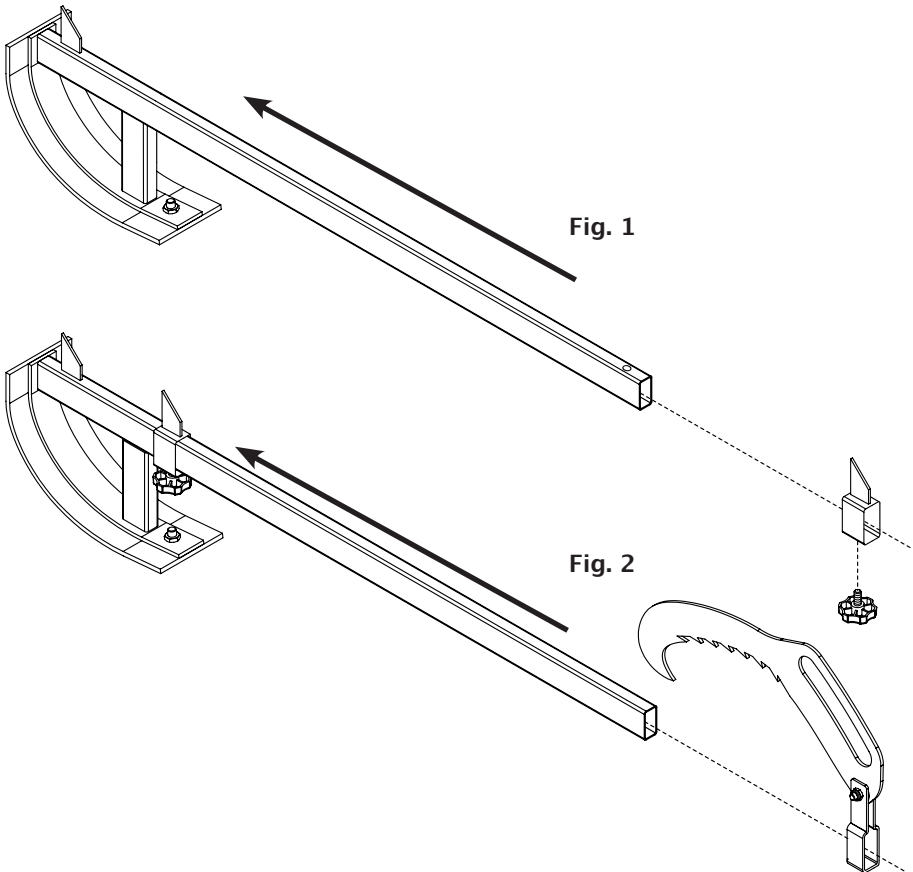
You will also need:

- 13mm Spanner or Socket
- 6mm Allen Key



Assembly Instructions

1. Lay everything out in a suitable assembly area to check all the parts are there. Full parts list and exploded diagram can be found on pages 12-13.
NOTE: The sliding support spike (5) is already on the lower frame (1-4), but is assembled the wrong way for packing purposes. Please remove the sliding support spike from the lower frame before starting assembly.
2. Slide the sliding support spike (5) to the bottom of the lower frame (1-4) and fasten securely with the M8 thumbscrew (6). Repeat this for both jacks (Fig. 1).
3. Slide the log hook (7-11) by the collar onto the lower frame (1-4) so that it situates at the bottom of the frame next to the sliding support spike (5). Repeat this for both jacks (Fig. 2).





- Slide the extending frame (12) inside the lower frame (1-4) so that the two holes align and fasten with the M8 x 45 bolt (13) and the M8 nut (11). Repeat this for both jacks (Fig. 3).

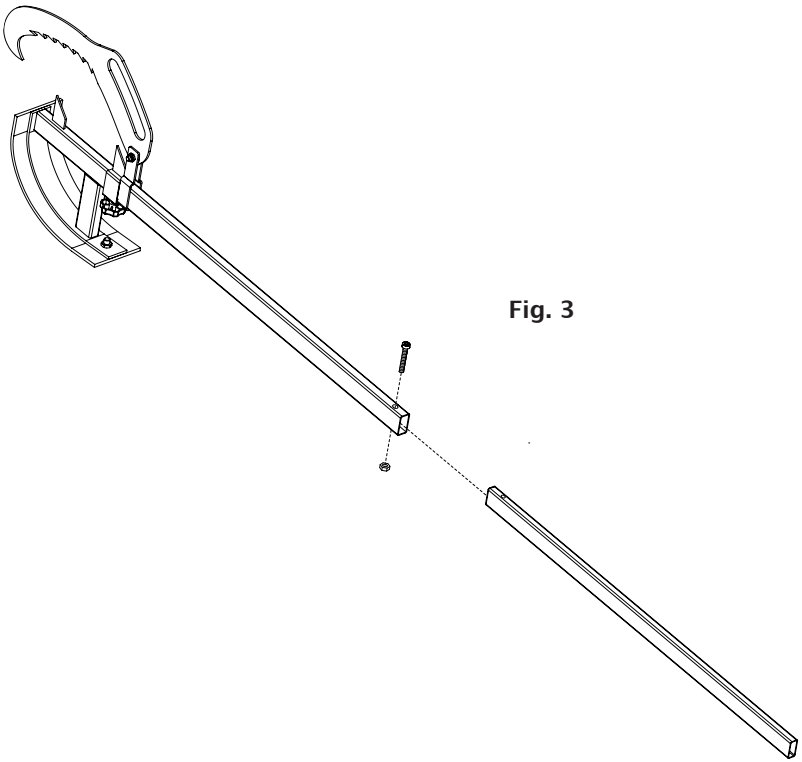


Fig. 3



- Slide the handle (14) over both extending frames (12) so that it forms a brace between them. The distance the handle is positioned down the extending frame is adjustable, however, the further toward the top of the extending frame the greater leverage that can be achieved when lifting logs. Once desired position is found tighten both sides securely with the M8 thumbscrews (6) (Fig. 4).

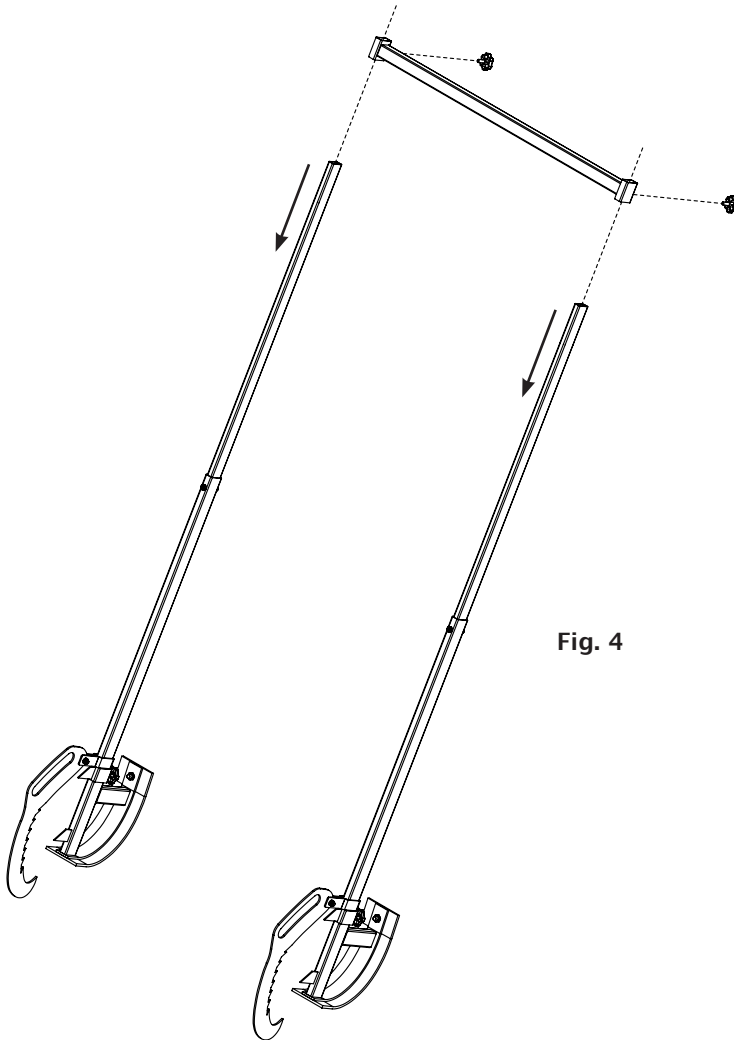


Fig. 4



Safety Instructions

- Make sure all nuts and bolts and especially the thumbscrews are tight and secure.
- Only use the log lifter on level ground. Do not use on sloping or uneven ground.
- Only lift logs that you are capable of lifting. Logs that are too heavy should be lifted with only one jack by one end (like a standard jack). Then when the log becomes a manageable weight, you can lift the rest of it fully with both jacks.
- Make sure that there are no trip hazards in the vicinity before lifting a log.
- Always position the log lifter in the middle of the log (lengthways). If the log is much heavier at one end, the position may have to be adjusted so that the weight balance is correct and the log is not leaning to one side.
- If the log starts to lean to one side when lifting, roll the log back to the starting position immediately, reposition the log lifter in a more balanced position and lift again.
- When lifting the log, make sure the hooks are firmly secured into the wood. If the hooks slip at any point when lifting, roll the log back to the starting position immediately, reposition so the hooks are in a better location and lift again.
- When cutting the log, alternate between the ends of the log for each cut so that the log remains balanced on the jack. Cutting an entire side first could cause the log to tip over and cause injury.

This list of warnings and cautions cannot be all-inclusive. If situations occur that are not covered by this manual, the operator must apply common sense and operate the wood chipper in a safe manner. Contact the dealers for assistance in your area.



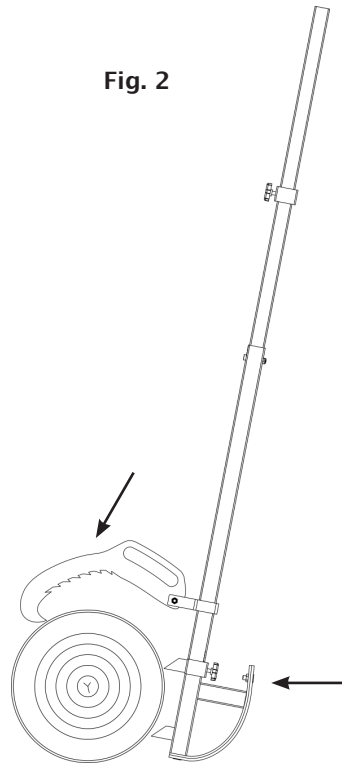
Operation

- Before use, check that assembly is correct and all the nuts and bolts, especially the thumbscrews are tight and secure (Fig. 1).
- Place the log lifter in the middle of the log, up against the side, so that the spikes on the lower frame just make contact with the log. If the log is significantly heavier on one end, the log jack needs to be positioned in a place where the weight of the log is balanced on each side (Fig. 2).
- Place the log hooks on top of the log, put do not press them into the log so that they can still move freely (Fig. 2).

Fig. 1

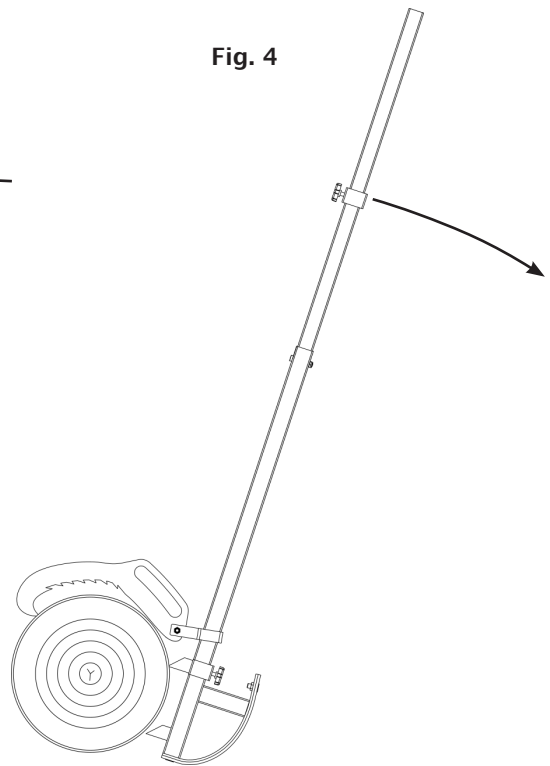


Fig. 2





- Push the handle forwards toward the log by up to 45° so that the hooks automatically adjust to the size of the log. The hooks should reach further over the log and the collars that attach the hooks to the frame will drop lower down the frame to adjust to the diameter of the log. For large logs, you want the bottom spike of the frame to be in contact with the middle of the log, so that you can roll the log by itself first and then use the feet of the frame. This method gives you maximum leverage (Fig. 3).
- Make sure the hooks grip into the wood and then slowly roll the log backward onto the two feet of the frame and continue rolling until the handles rest on the ground, with the log now lifted entirely from the floor (Fig. 4+5).



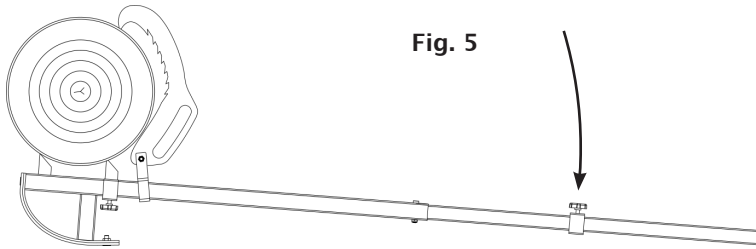


Fig. 5

- Make sure the log is stable and secured in the lifted position.
- When cutting the log down into smaller logs, you must perform each cut from alternating sides of the log so that the log remains balanced on the jacks. Cut once on the right, then the left and then the right and so on (Fig. 6).
- To cut the portion of log in between the jacks, the best method is to cut around 3/4 of the way through the wood whilst the log is off the ground and then roll the log back to the starting position and cut the remainder. A full cut in the middle will cause the saw to become trapped as the weight of the log shifts toward the centre. By rolling the log back to the start position, the portion that hasn't been cut will be off the ground.

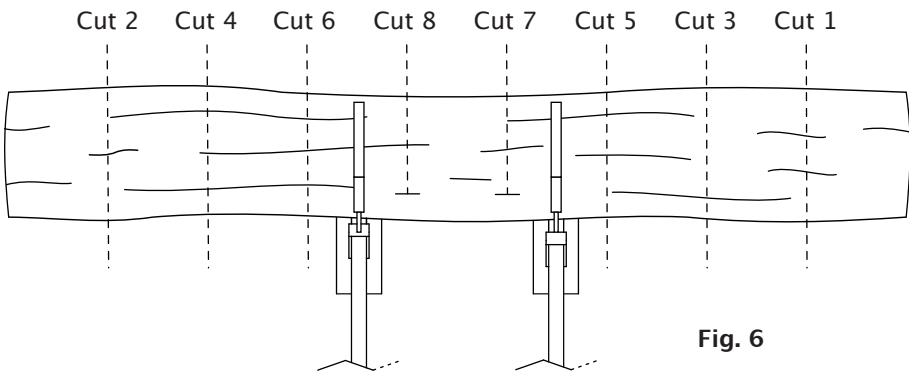
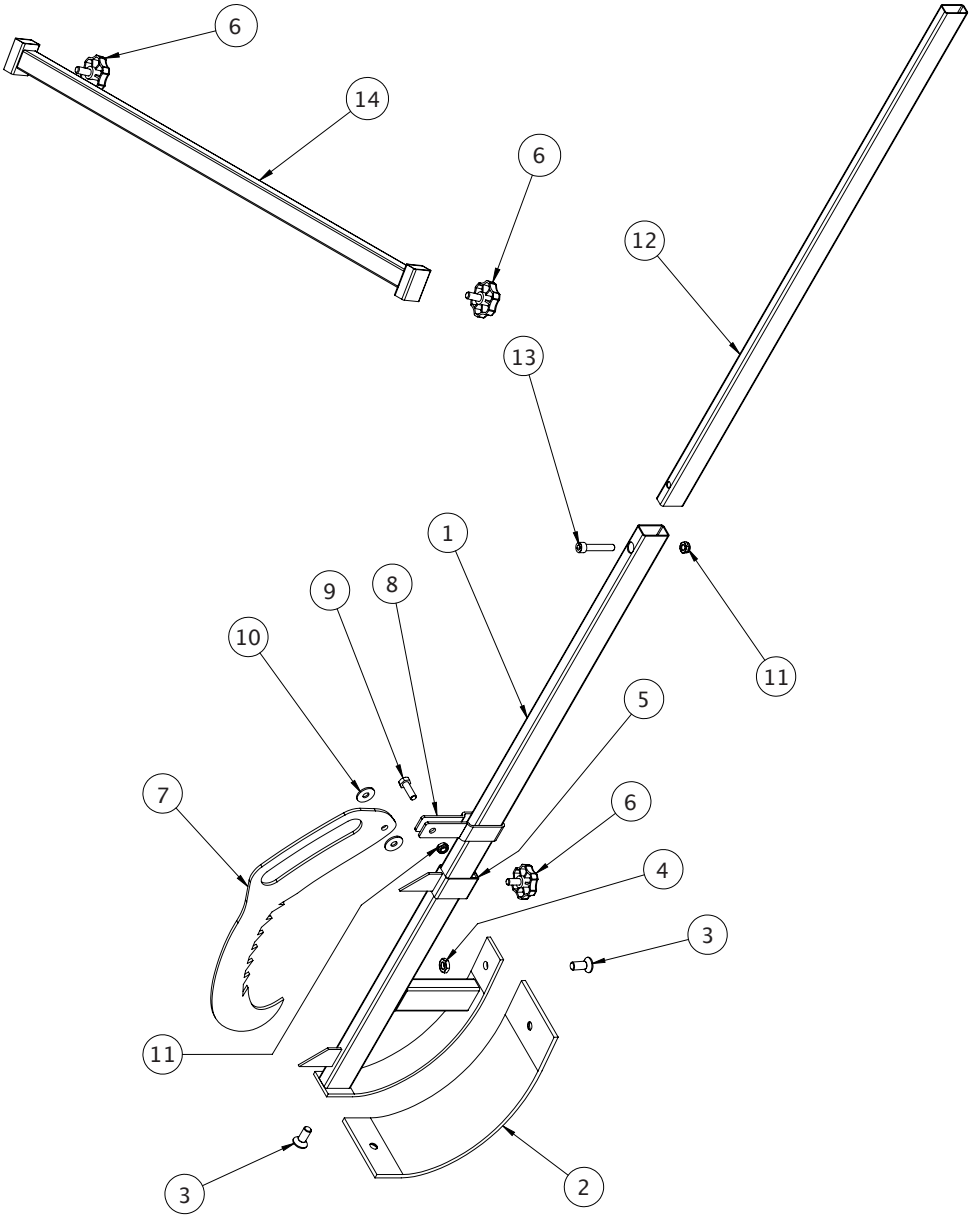


Fig. 6



Exploded Diagram





Part No.	Part Description	Qty.
1	Lower Frame	2
2	Plastic Foot	2
3	M10 x 25 Bolt	4
4	M10 Nut	2
5	Sliding Support Spike	2
6	M8 Thumbscrew	4
7	Log Hook	2
8	Log Hook Collar	2
9	M8 x 25 Bolt	2
10	M8 Flat Washer	4
11	M8 Nut	4
12	Extending Frame	2
13	M8 x 45 Bolt	2
14	Handle	1



Warranty

This product carries a limited parts warranty for 1 year from the date of purchase. Please keep your proof of purchase as this will be required for any claim.

Should this product become defective, contact the store where it was purchased and either replacement parts will be issued, it will be repaired or it will be replaced free of charge.

IMPORTANT: NO RESPONSIBILITY IS ACCEPTED FOR INCORRECT USE OF THIS PRODUCT. MODIFICATION OF THIS PRODUCT (UNLESS SAID MODIFICATION HAS BEEN AUTHORISED BY FOREST MASTER) WILL VOID THE WARRANTY.

This Warranty Does Not Cover:

1. Any part that has become inoperative due to misuse, abuse, neglect, accident, improper maintenance or alteration.
2. The unit, if it has not been operated and/or maintained in accordance with the owner's manual.
3. Normal wear.
4. Routine maintenance items such as lubricants, blade sharpening etc.
5. Normal deterioration of the exterior finish due to use or exposure.

Shipping Charges:

Shipping charges for the delivery or collection of the unit, parts of the units or attachments to the unit are the responsibility of the purchaser. The purchaser must pay transportation charges for any part submitted for replacement under this warranty unless such return is requested by Forest Master.

NOTE: It is our policy to continually improve products and as such we reserve the right to alter data, specification and component parts without prior notice.

Manufactured under license for Forest Master Limited.



Updates

Forest Master Ltd are dedicated to updating and continuously improving our products, processes and designs. The information in this manual is correct at the time of printing, however changes can be made to certain aspects of the product and it's uses due to Forest Master's continuous improvement policy. The online manual is consistently updated on the Forest Master website and new information can be found there.

The online manual can be found on the download section of the Forest Master website: www.forest-master.com

If you need further help with any matter concerning the manual or product, contact our technical help line on: +44 (0)191 276 6553