



FOREST MASTER[®]

Product Catalogue

Award Winning UK Manufacturer

CONTENTS

COMPACT WOOD CHIPPERS	4
PROFESSIONAL CHIPPERS AND MULCHERS	7
COMPACT GARDEN SHREDDER MULCHERS	10
BATTERY CHIPPER AND MULCHER	13
ELECTRIC LOG SPLITTERS	15
BATTERY LOG SPLITTERS	20
FAST FIRE ELECTRIC LOG SPLITTERS	23
FM8VE VERTICAL LOG SPLITTER	25
MANUAL LOG SPLITTERS	26
UNIVERSAL SAWMILL STATION & SAW HORSES	28
ACCESSORIES	32
STAY UP TO DATE	35

Note: All dimensions, weight, pressure and force are approximate. Ram pressures stated were measured under the environmental conditions of our test facility and will change with the environmental conditions where used.

Welcome to Forest Master, the UK's number one brand for log splitters, wood chippers and all related accessories.

Boasting over 30 years of experience in the industry, our lead engineers have continued to design the perfect prototypes of petrol, electric, battery and manual log splitters and manufacture them for you. You'll also find petrol and electric wood chippers and mulchers, and a variety of other must have accessories.

We make it possible to turn the laborious task of splitting that pile of logs which would normally take you many hours, into a fun and stress relieving activity. Forest Master is committed to providing exceptional service to all our customers. Our website resource section provides detailed technical advice should you need it; however, UK based experts are on hand to help with any further questions you may have.



Interested in a product and want to find out more? Simply scan the QR code with your phone to go directly to that product on our website!

Compact Wood Chippers

Produces 15 mm chippings

Hinged hopper and chute, stores in less space than an average wheelbarrow

Direct drive motor

Drum speed up to 3600 rpm

Robust steel body design

Get ahead of the game with Forest Master's elite range of wood chippers, garden shredders and mulchers. Backed by gardening experts worldwide.

Proving that bigger isn't always better, our petrol and electric wood chippers, garden shredders and mulchers are perfect for everyday use. Designed with you in mind, they're easy to store, pick up and go. These wood chippers can handle branches up to 2 inches in diameter, with reversible steel blades and a direct drive system. Our chippers, shredders and mulchers are built to last.

FM4DDE

The FM4DDE is a small but mighty electric chipper, with a powerful 2800 Watt electric motor which runs off standard 230 V household mains electricity. Its compact size and powerful electric motor make this ideal for domestic use.



Patent Pending (GB2100107.8) / International (PCT/IB2021/054494)

FM6DD

The FM6DD features a powerful 6hp LCT engine that can rotate the chipper drum at a maximum of 3600 rpm. This enables it to comfortably chip all kinds of freshly cut hard or soft wood.



Patent Pending (GB2100107.8) / International (PCT/IB2021/054494)

FM6DDES

An upgraded Electric Start version of the FM6DD for an easier start-up procedure, this model also includes a pull start as a backup.



Patent Pending (GB2100107.8) / International (PCT/IB2021/054494)

The Professional Chipper Mulcher series features a rotating drum to optimize the speed and efficiency your machine operates at depending on the material.



Professional Wood Chippers

The ultimate in our range of wood chipping power. Designed for professionals and commercial use our 9, 14 and 18 hp chippers are the perfect machine for shredding large volumes of wood on a regular basis. Built for absolute power, simplicity, and manoeuvrability which you won't find anywhere else on the market.

Tow attachments are available for convenient transportation on site.*



FM9DD

9 hp LCT Maxx 306cc 4 stroke engine. Capable of chipping wood up to a diameter of 75 mm (3 inch).

FM14DD

14 hp LCT Maxx 460cc 4 stroke engine. Capable of chipping wood up to a diameter of 100 mm (4 inch).



FM18DD

18 hp LCT Maxx 478cc 4 stroke engine. Capable of chipping wood up to a diameter of 125 mm (5 inch).



Patent Pending (GB2100107.8) / International (PCT/IB2021/054494)

*Not suitable for transportation on public roads.



Designed and tested here in the UK, our wood chippers and splitters are designed and manufactured with your needs in mind to be the ultimate in speed, power and efficiency.

Model	FM4DDE	FM6DD	FM6DDES	FM9DD	FM14DD	FM18DD
Power	4 hp 2800 watt single phase electric motor	Petrol Engine	Petrol Engine Electric Start	Petrol Engine Electric Start	Petrol Engine Electric Start	Petrol Engine Electric Start
Plug	3-Pin plug (EU adapter supplied)	N/A	N/A	N/A	N/A	N/A
Engine	N/A	LCT Maxx series 6 hp 208 cc 4 stroke	LCT Maxx series 6 hp 208 cc 4 stroke	LCT Maxx series 9 hp 306 cc 4 stroke	LCT Maxx series 14 hp 460 cc 4 stroke	LCT Maxx series 18 hp 478 cc 4 stroke
Fuel	N/A	Petrol	Petrol	Petrol	Petrol	Petrol
Max Wood Diameter	2"/50 mm	2"/50 mm	2"/50 mm	3"/75 mm	4"/100 mm	5"/125 mm
Max Drum Speed	2800 rpm	3600 rpm	3600 rpm	3600 rpm	3600 rpm	3600 rpm
Net Weight	35 kg	38 kg	40 kg	92 kg	97 kg	106 kg
Overall Height	784 mm	780 mm	780 mm	1200 mm	1220 mm	1220 mm
Overall Width	480mm	480 mm	480 mm	1690 mm	1690 mm	1690 mm
Overall Length	910mm	910 mm	910 mm	609 mm	700 mm	730 mm
Starting Mechanism	Electric Start	Pull Start	Pull and Electric Start	Pull and Electric Start	Electric Start	Electric Start



Complete list of spares, service and repairs are available from our in-house workshop



Compact Garden Shredder Mulchers

Mulches all green and garden waste

Robust steel body design

Rotating drum to suit the material being processed

Direct drive motor

Convert into a chipper using the upper discharge chute accessory

Produces 10 mm down mulch

FM4DDE-MUL

Compact, lightweight, powerful and robust our electric shredder mulcher is capable of taking most garden waste you can throw at it and processing it into precious mulch, crucial in creating effective compost for your garden.



Patent Pending (GB2100107.8) / International (PCT/IB2021/054494)

FM6DD-MUL

With more power than the electric and the added portability of a petrol engine, this mulcher is suited to large gardens and areas where access to electricity is limited. Our machine is a trusted one-stop shop for all your mulching needs.



Patent Pending (GB2100107.8) / International (PCT/IB2021/054494)

Not sure if you require a garden mulcher or a wood chipper? This is a question of the past as our range of mulchers are perfectly capable of also chipping wood into chips that are 10 mm and below.

If you're mulching material that is particularly wet or likes to stick to the chutes, the mulcher is designed in such a way that you can simply hose down these areas to clear out any excess material. Features a rotating drum mechanism that allows the discharge chute additional ground clearance.

FM6DDES-MUL

This model is an upgraded Electric Start version of the FM6DD-MUL for an easier start-up, also includes a pull start as a backup. A ground-breaking design implemented within this unique and innovative machine is the ability to completely rotate/adjust the chipper drum to suit the material being processed.



Patent Pending (GB2100107.8) / International (PCT/IB2021/054494)

Model	FM4DD-MUL	FM6DD-MUL	FM6DDES-MUL
Power	4 hp 2800 watt single phase electric motor	Petrol Engine	Petrol Engine Electric Start
Plug	3-Pin plug (EU adapter supplied)	N/A	N/A
Engine	N/A	LCT Maxx series 6hp 208cc 4 stroke	LCT Maxx series 6hp 208cc 4 stroke
Max Wood Diameter	2"/50 mm	2"/50 mm	2"/50 mm
Max Drum Speed	2800 rpm	3600 rpm	3600 rpm
Net Weight	35 kg	38 kg	40 kg
Overall Height	784 mm	780 mm	780 mm
Overall Width	480 mm	480 mm	480 mm
Overall Length	910 mm	910 mm	910 mm
Number of Blades	2 (Reversible)	2 (Reversible)	2 (Reversible)

Battery Chipper and Mulcher



COMING SOON

Currently under testing and development our revolutionary battery chipper and mulcher's will make cutting back the hedges or clearing the allotment a breeze. Unlimited portability, 5hp motor and zero emissions will make these the ultimate in eco-friendly wood chipping and mulching.

Make sure you don't miss the release and be among the first to know by signing up to our newsletter. Details in the 'Stay Up to Date' section.

FM5DD-ECO

An upgrade to the FM4DDE electric chipper with increased power up to 5 hp and the added portability of a petrol chipper.

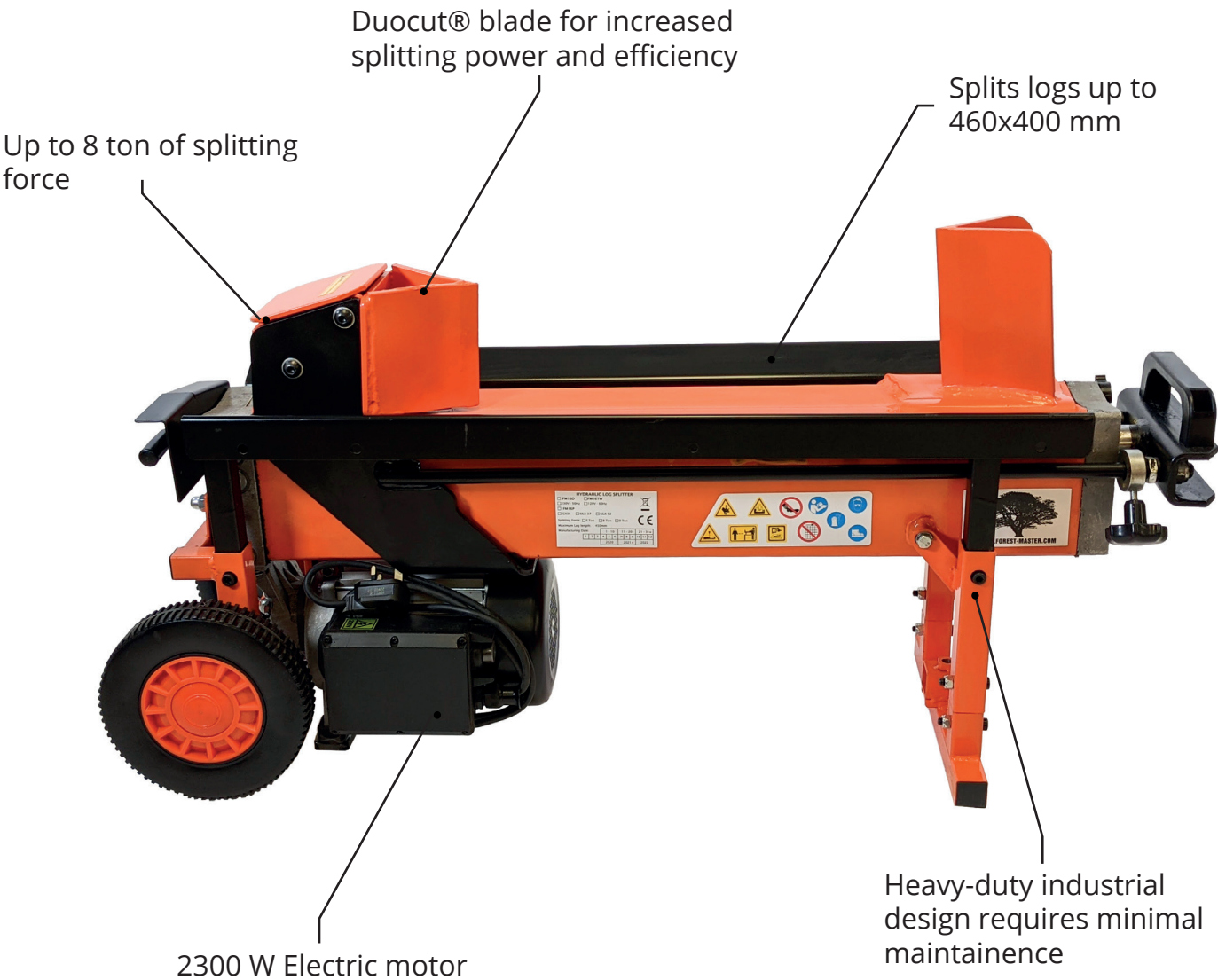


FM5DD-ECO-MUL

An upgrade to the FM4DDE-MUL electric mulcher with increased power up to 5 hp and the added portability of a petrol mulcher.



Electric Log Splitters

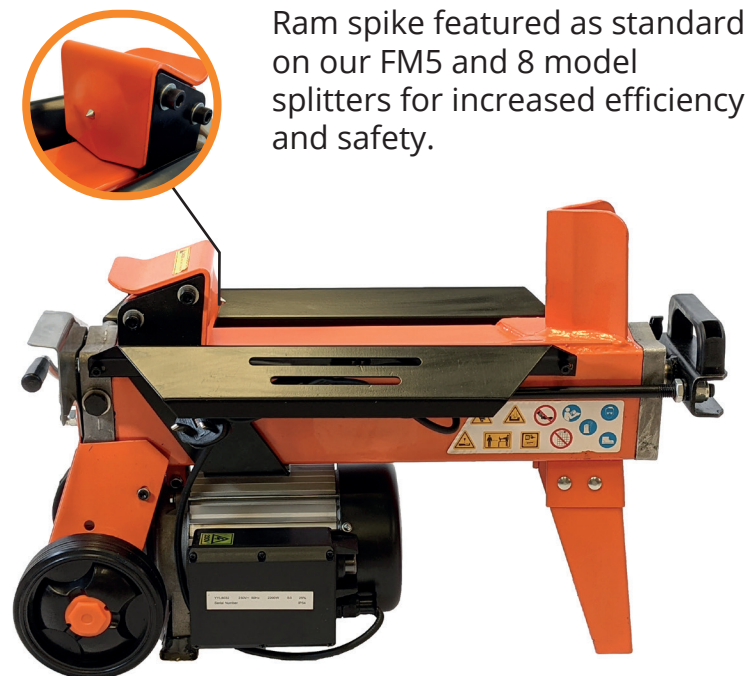


Electric powered log splitters offer powerful and long-lasting use with minimal maintenance required. Our log splitters are also available with our patented Duocut blade for increased efficiency, designed to split through tough and knotty wood. The Ramstop feature allows the user to drastically reduce cycle times when splitting shorter logs, simply engage the Ramstop to limit the return distance of the moving edge.

All log splitters are also available with a stand or stand with trolley castors for increased usability and portability. All splitters feature a workbench and safety guard as standard.

FM5D-TC

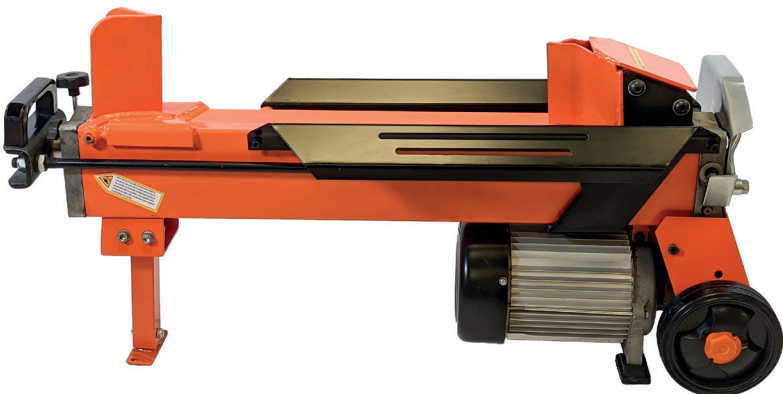
This compact yet powerful log splitter is the ideal product for beginners or for those splitting logs for use in small to medium wood burners. It is best suited to splitting unseasoned or green wood, which it does with ease and efficiency you can't find in similarly priced log splitters.



Ram spike featured as standard on our FM5 and 8 model splitters for increased efficiency and safety.

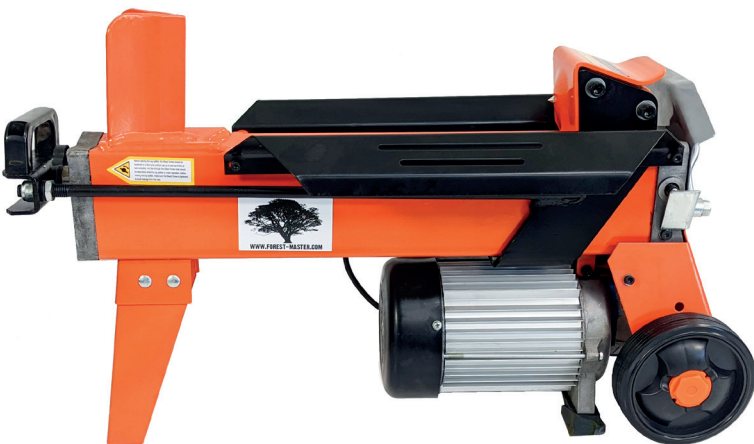
FM10D-TC

Capable of splitting logs 450 mm length and 400 mm diameter, fitted with the trademarked Duocut blade and Ramstop to reduce cycle time. This log splitter is capable of handling most domestic needs.



FM8D-TC

Ideal for when using small to medium log burners, the FM8 is the big brother to the FM5 featuring a stronger moving carriage for splitting tougher wood and larger log bed capable of splitting logs up to 370 mm in length and 300 mm in diameter.



FM10D-7-TC

The FM10-7-TC is the 7 ton model of the FM10 including all the same features but with a ram pressure of up to 500 bar. Suited for heavy duty domestic use this splitter comfortably handles hard and soft wood.



FM16D-TC

Our most powerful log splitter to date, the FM16 is a professional heavy duty log splitter that can produce up to 8 ton of splitting force. Features the Duocut blade as standard with a two speed 40 mm ram for maximum speed, efficiency, and power.



Model	FM5D-TC	FM8D-TC	FM10D-TC	FM10D-7-TC	FM16D-TC
Splitting force	5 ton	5 ton	5 ton	7 ton	8 ton
Hydraulic Pressure	400 bar	400 bar	400 bar	500 bar	550 bar
Plug	Standard UK 3 Pin	Standard UK 3 Pin	Standard UK 3 Pin	Standard UK 3 Pin	Standard UK 3 Pin
Max Log Diameter	250 mm	250 mm	500 mm	500 mm	600 mm
Max Log Length	300 mm	370 mm	450 mm	450 mm	450 mm
Weight	32 kg	37 kg	47 kg	49 kg	78 kg
Weight with Workbench and Safety guard	44 kg	49 kg	59kg	61kg	90 kg
Dimensions (LxWxH)	710 x 270 x 510 mm	780 x 270 x 510 mm	940 x 270 x 510 mm	940 x 270 x 510 mm	1060 x 278 x 522 mm
Dimensions with stand (LxWxH)	830 x 730 x 1000 mm	830 x 730 x 1000 mm	940 x 730 x 1000 mm	940 x 730 x 1000 mm	1060 x 730 x 1000 mm

Available Addons

All electric log splitters are available as a base unit, with a stand or stand and trolley castor wheels.

FM5-TC



FM5T-TC

With Stand
FM8-TC



FM5TW-TC

Trolley with castors



FM8T-TC

With Stand
FM10-TC



FM8TW-TC

Trolley with castors



FM10T-TC

With Stand
FM10-7-TC



FM10TW-TC

Trolley with castors



FM10T-7-TC

With Stand
FM16-TC



FM10TW-7-TC

Trolley with castors



FM16TW-TC

Trolley with castors



Battery Log Splitters

Same splitting power as our
plug-in hydraulic models

Fits any heavy duty battery
including car and leisure

All terrain stand for
splitting even on the
roughest terrain



Unique battery
power for ultimate
portability

Eco through innovation, designed and developed here in the UK by our in-house team of engineers. Split anywhere, any time.

Up to 30% faster ram speed than its competitors, the portability of a petrol splitter whilst being as eco-friendly as an electric. These splitters tick all the boxes. Never seen before on the market the battery on these splitters can be charged using a solar panel for complete zero emissions splitting.

Can be powered using a standard car battery or upgraded for increased working time between charges.

FM5ECO-TC



Splitting Force	5 Ton
Hydraulic Pressure	400 bar
Max Log Diameter	250 mm
Max Log Length	300 mm



FM8ECO-TC



Splitting Force	5 Ton
Hydraulic Pressure	400 bar
Max Log Diameter	250 mm
Max Log Length	370 mm



FM10ECO-TC



Splitting Force	7 Ton
Hydraulic Pressure	500 bar
Max Log Diameter	500 mm
Max Log Length	450 mm



FM16ECO-TC



Splitting Force	8 Ton
Hydraulic Pressure	550 bar
Max Log Diameter	600 mm
Max Log Length	450 mm





Fast Fire Electric Log Splitters



The fast fire kinetic log splitter is a new and innovative machine to the market, capable of splitting logs in record time with minimal effort.

The Forest Master Fast Fire Log Splitter is a kinetic log splitter capable of producing 8 tons of splitting power, making easy work of both fresh and seasoned wood. Available in both petrol and electric models, this machine can split logs up to 520 mm in length and 400 mm in diameter.

This fast, reliable, and efficient design drastically reduces the cycle time of the splitter to 3 seconds.

FM8FFE

Kinetic electric splitter capable of splitting a log every 3 seconds with a massive 8 ton of splitting power. Perfect for commercial or domestic use.



FM8FF-HTW

Kinetic Fast Fire splitter fitted with an ultra reliable 4-stroke Honda GX50 engine. Massive 8 ton of splitting power with the added benefit of portability due to the petrol engine.

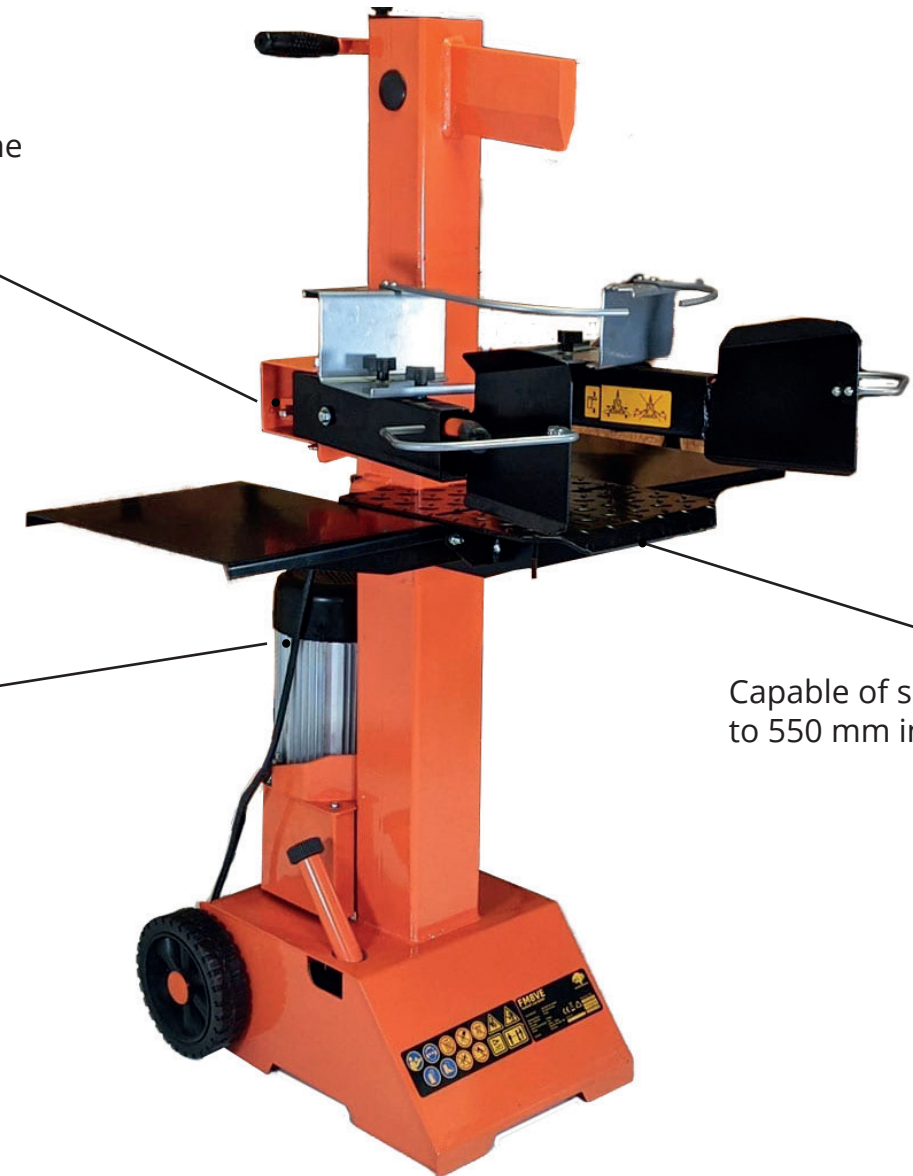


FM8VE Vertical Log Splitter

Ram stop for reduced cycle time

2300 W Electric motor

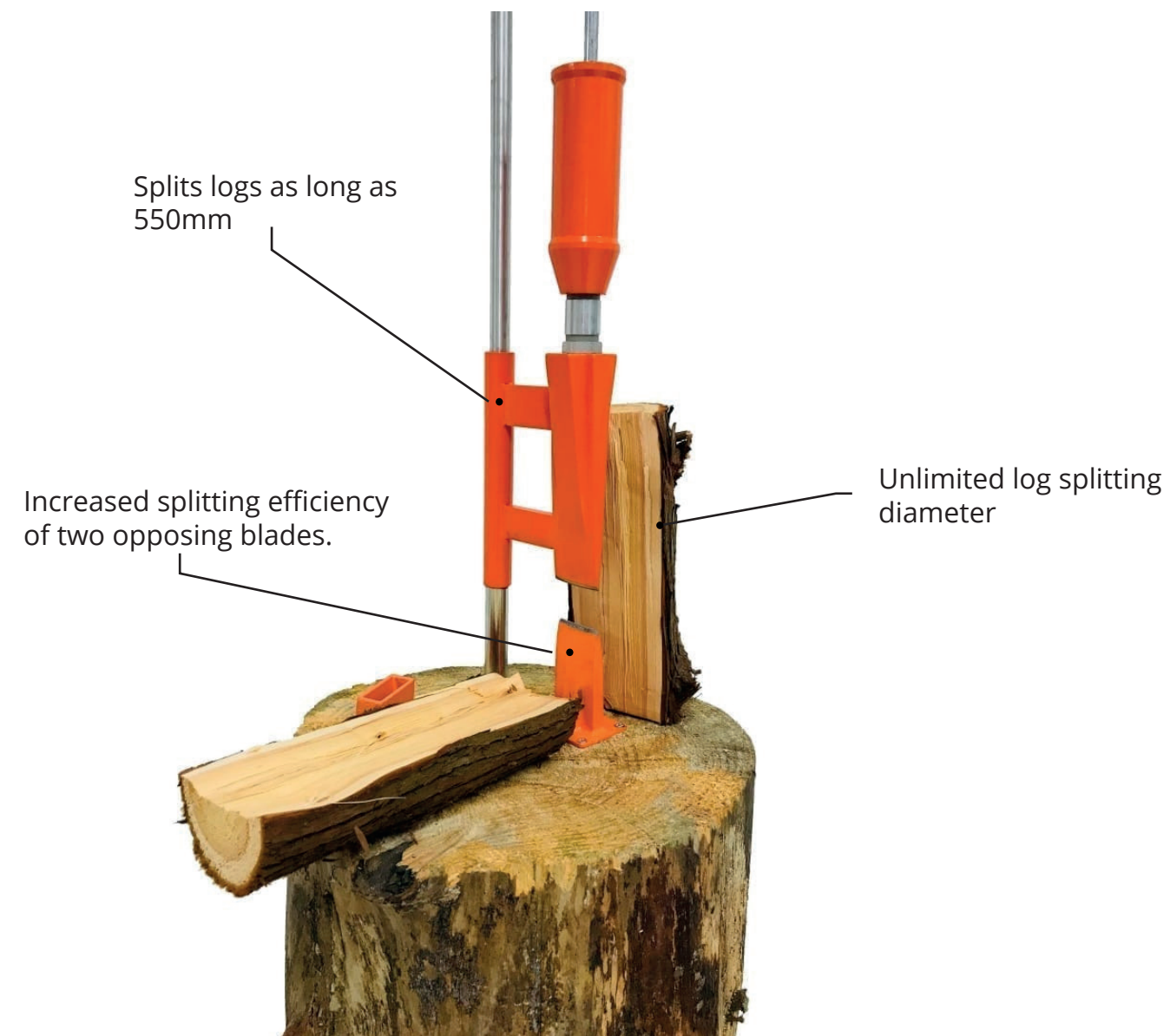
Capable of splitting logs up to 550 mm in length



Fitted with the largest electric motor that can be used on a 3-pin plug our FM8VE is a sturdy vertical log splitter capable of splitting logs up to 550 mm in length. Armed with 8 ton of splitting power this vertical log splitter can easily split hard unseasoned wood with ease.

Easier to load with large logs than a horizontal splitter, our vertical splitter will comfortably handle a variety of log sizes up to 300 mm in diameter and 550 mm in length.

Manual Log Splitters



Typically lighter, quieter, and easier to store than their electric or petrol counterparts. Our manual log splitters are perfect for the eco-friendly or those who just prefer to do it themselves.

Our manual log splitters can do it all whether you need a heavy-duty splitter for hardwood or a lightweight and portable wedge for kindling. The revolutionary Smart Splitter weighs in at only 12 kg but can split logs 550 mm in length no problem, this multi-use tool can split large, seasoned logs, or quickly split kindling all whilst being far safer than using an axe or mallet.

DUO10T

Looking for a heavy-duty log splitter that has a massive 10 ton of splitting force and doesn't need petrol or electric? Look no further. The DUO10T features a 2-speed jack and our Duocut blade to easily split knotty wood up to 510 mm in length and 300 mm in diameter.



FMSS

A lightweight alternative to petrol or electric log splitters, the revolutionary Smart Splitter weighs in at only 12 kg but can split logs 550 mm in length and an unlimited diameter no problem. Safe, reliable and easy to use.



USBB

Using just 4 screws simply mount the Ultimate DuoCut Kindling Axe Base to a convenient wood base and it is ready for use. Safely split kindling using the base as a fixed axe bottom. Includes safety cover.



Universal Sawmill Station

Universal Sawmill Station

Chainsaw guide handle allows the user to seamlessly direct, ease and pivot the chainsaw through the wood.

Handles logs up to 1450 mm long and 520 mm wide.

Can be mounted horizontally or vertically.



Guide rails allow the chainsaw to run along and perform perfectly horizontal cuts.



Chainsaw can be mounted vertically so bark from both sides of the log can be cut off before performing multiple horizontal cuts.



Guides can be quickly lowered to perform multiple cuts without adjusting the position of the wood.

Can also be used as a sawhorse with the included V-clamps.

The log can be placed on a rotational bracket which means it can be rotated 90° between cuts and locked off to quickly make fence posts.



The Forest Master Universal Woodworking Station (UWWS) is the ultimate tool for all your Sawmill requirements, plus more, without breaking the bank. The Universal Sawmill bundles together a chainsaw sawmill, log sawhorse and a mitre saw workbench all together in one ultimate tool.

From Setup to milling in just a few minutes, eliminate the time demanded to readjust the wood each time you want to perform a new cut. Simply readjust the height (which takes moments) and repeat the effective process until you produce all the accurately sized wood you need with a perfect finish.



- Bulk log holder for cutting multiple logs at once
- Supplied with 2 up-right log supports
- No base needed, just push into the ground



SKU
BLSS



- Adjustable base spacing allowing the user to choose length of cuts
- Supplied with 3 up-right 'H' log supports
- Can hold a stack of logs up to 520 mm high



SKU
BLS-3H



- 2-in-1 Tool felling lever and farm jack
- Safest way to guide trees when felling
- Reinforced cast iron capable of lifting 3 tons
- Must-have tool for every tree surgeon



SKU
FM3-LP



- 2 in 1 Log lifter and Saw Horse
- Max log diameter for use 500mm
- Serrated jaws grip logs tightly and securely



SKU
FMLL



- Safely secure a log for cutting
- Supports logs up to 6 m long
- Maximum log diameter 360 mm



SKU
USH



- Quick load and release for maximum efficiency log cutting
- Independently pivoting teeth hold logs securely
- Max compatible log size 4 m Length x 250 mm Diameter



SKU
QSH

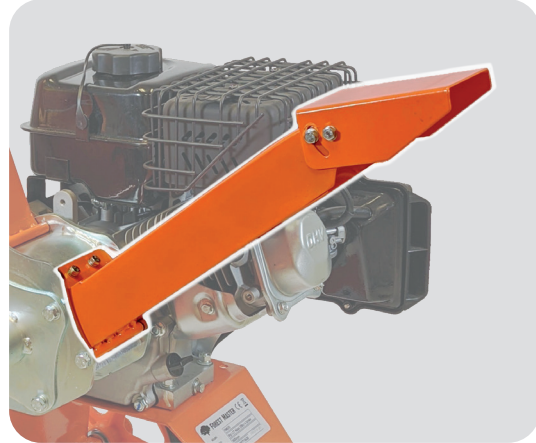


- Fits to any existing workbench
- Spiked jaws hold logs securely
- Fits bench tops between 15 mm – 25 mm thick



SKU
BJL25

Accessories



Mulcher Accessory Kit

- Upper exit chute for mulcher
- Discharge your wood chips directly into a wheelbarrow
- Produce larger wood chips
- Includes upper exit chute, blanking plate and necessary bolts.

MUL-CHIP-KIT

Mulcher Accessory Kit for FM4, 6 and 6ES Chippers and Mulchers



Stands for Electric Log Splitters



T-STAND

T-Stand for FM5,8 and 10 electric log splitters.



TW-STAND

TW-Trolley Stand with Castors for FM5,8 and 10 electric log splitters.



FMTW16

TW-Trolley Stand for FM16 electric log splitter.



Other Accessories



AT-STAND

All terrain stand for FM5, 8 and 10 model splitters



FM-TOW

Tow attachment designed to fit all our chippers and mulchers.



FM-HANDLE

Additional handle designed to make manoeuvring our FM4 and 6 chippers and mulchers effortless.

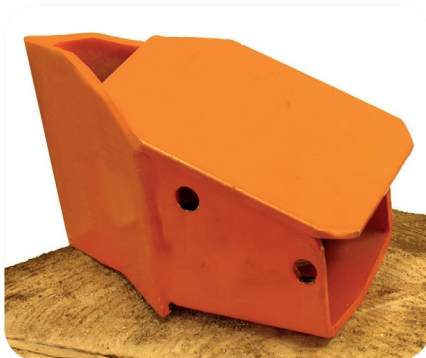


Duocut Blade for Electric Log Splitters

This blade is designed to fit our FM5, FM8 and FM10 series of log splitters and will fit other makes where the pusher block is located in the moving carriage with just four bolts.

FM10-104

Duocut Blade for FM10, FM8 and FM5 Log Splitters



Accessories



6DD-4DDE-016P-H13

Forged steel wood chipper replacement blades



FM-HLM-01

Safety helmet with mesh visor and ear defenders



FM-VIS-01

Ear defenders and polycarbonate faceshield visor



FM-MM1

3 in 1 Digital moisture meter damp detector and timber tester



HYD46+

Electric log splitter hydraulic fluid - available in sizes 600 ml and 5 L



10W-40+600ML

Forest Master 10W-40 engine oil



CVB

Heavy duty canvas log carrier firewood bag



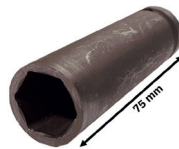
FM10-051

Pusher block for FM5, FM8 & FM10 log splitters



FM-STOOL

Log splitter saddle stool - adjustable hydraulic swivel stool



FM-SKT

Compact chipper blade removal tool - 16mm hexagonal impact socket





Stay Up To Date

Sign up for our Newsletter and check out our social channels to be first in line for our continuous stream of brand new innovative and market-leading products.

Instagram



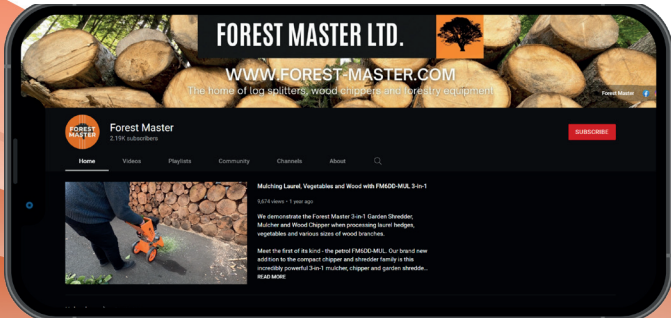
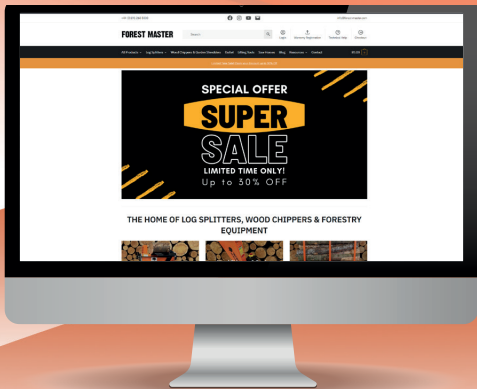
LinkedIn



Newsletter



YouTube





Industry Road
Heaton
Newcastle Upon Tyne
NE6 5XB



Sales Enquiries
info@forest-master.com
+44 (0)191 265 5000



Technical Enquiries
technical@forest-master.com
+44 (0)191 276 6553

www.forest-master.com