



WORK BENCH AND GUARD ASSEMBLY

ATTACH THE WORK BENCH AND GUARD

The work bench and guard are only necessary to comply with CE Approval and health and safety at work legislation in the European Union. Outside of the European Union the individual user can choose to not use either or just use the work bench. If you have purchased a stand for your log splitter, you may find it easier to fit the stand before fitting the work bench and guard.

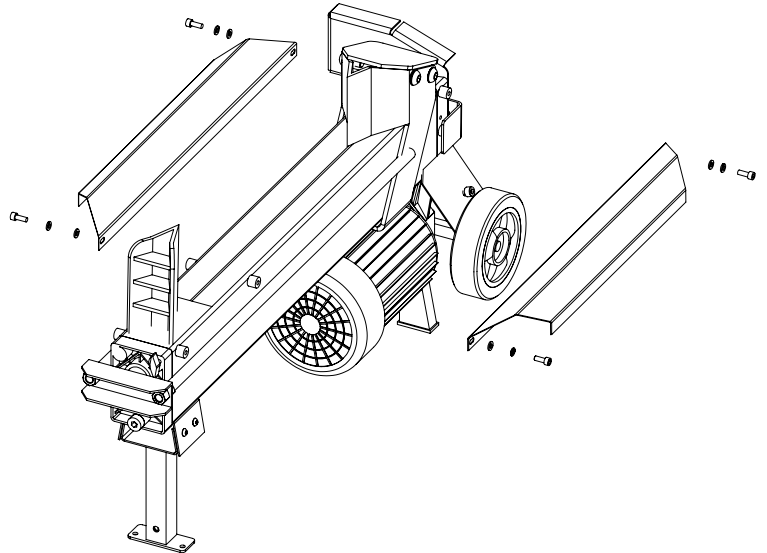
The work bench & guard package contains

- 1 x Work Bench (with rear brackets attached)
- 6 x Guard panels
- 25 x M6x12 Button Head Bolts (1 spare)
- 5 x M6x16 Cap Head Bolts (7 for FM10) (1 spare)
- 25 x M6 nyloc Nut (1 spare)
- 5 x M6 Spring Washers (7 for FM10) (1 spare)
- 53 x M6 Flat Washers (55 for FM10) (1 spare)

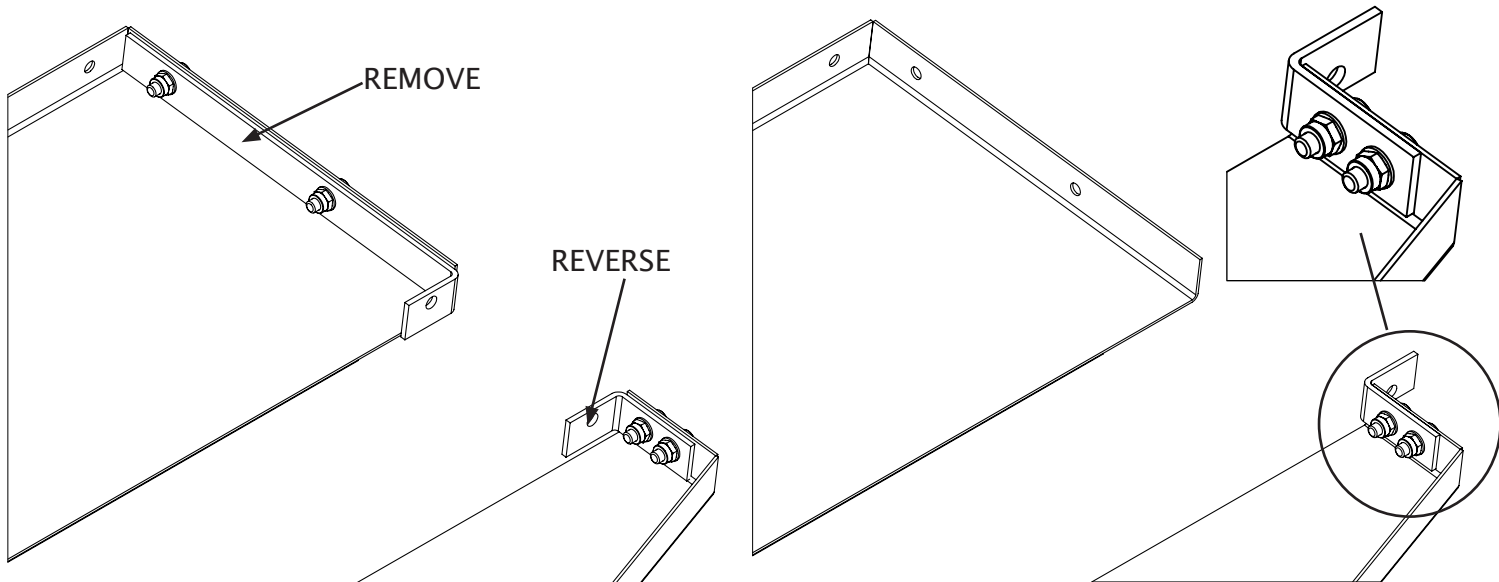
Attaching The Work Bench

Using an M6 Allen key (not supplied), undo the bolts and remove the existing log support rails.

If the lifting handle is fitted to the ram crosspiece, unbolt and remove it.



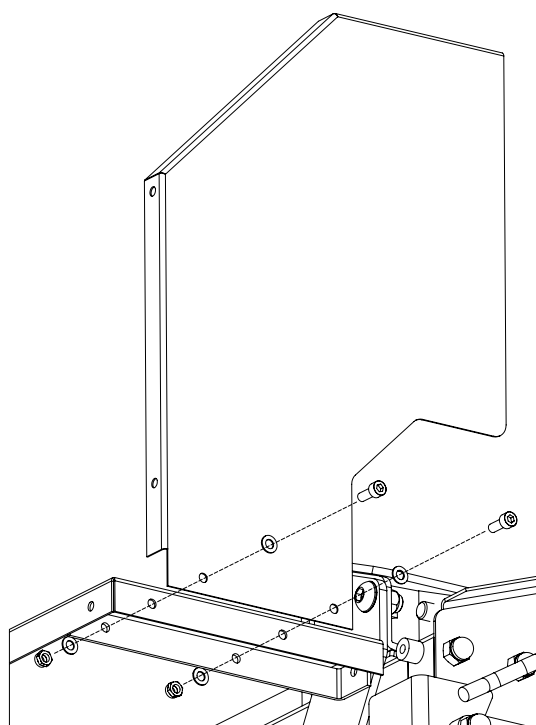
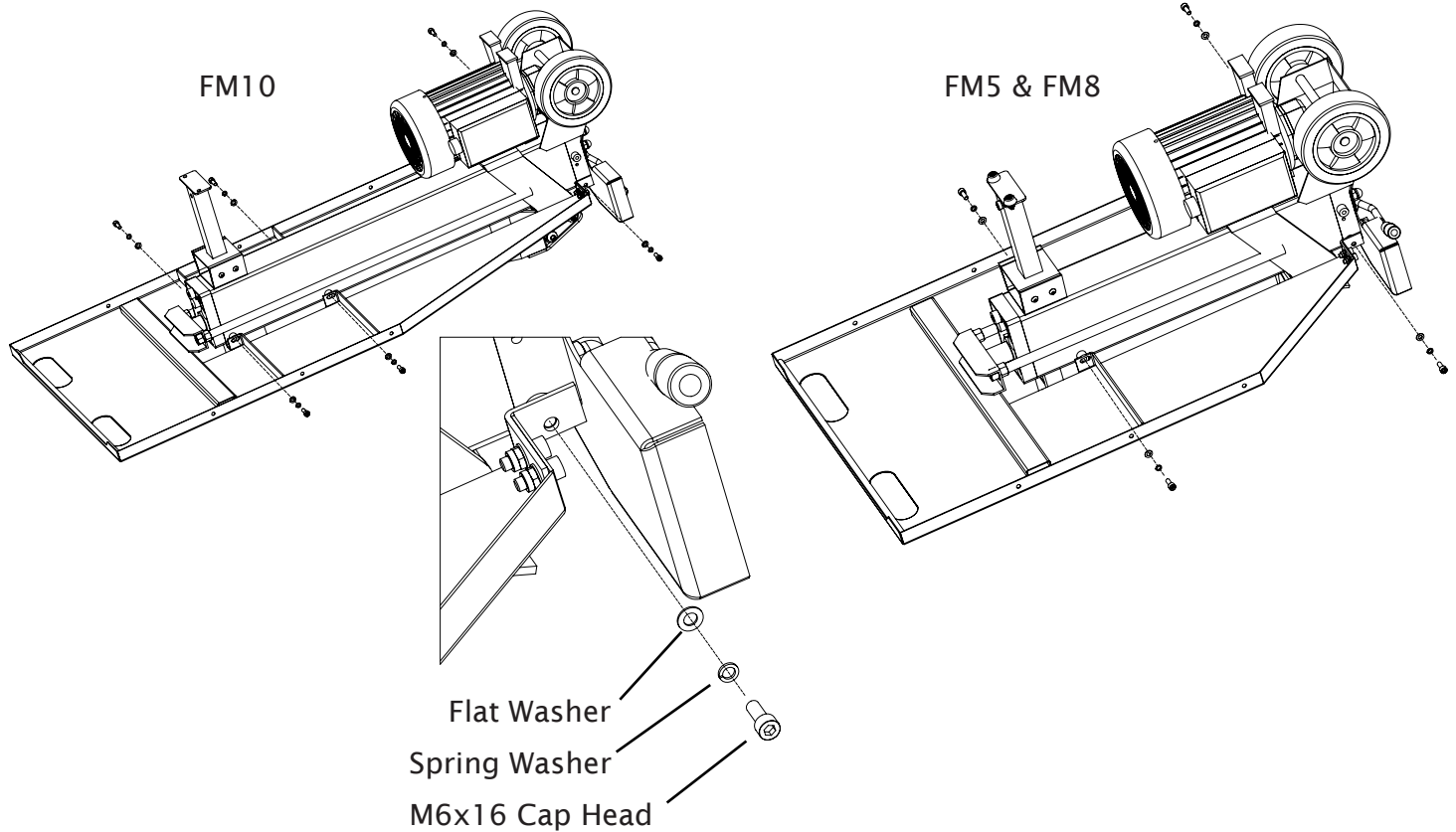
For shipping, the rear mounting brackets are fastened to the faces to which they attach, in a reversed position. Before assembly, remove the long mounting bracket (it will be re-attached later) and remove then reverse the short rear bracket. Note that it must still be fixed to the inner face of the rear side.



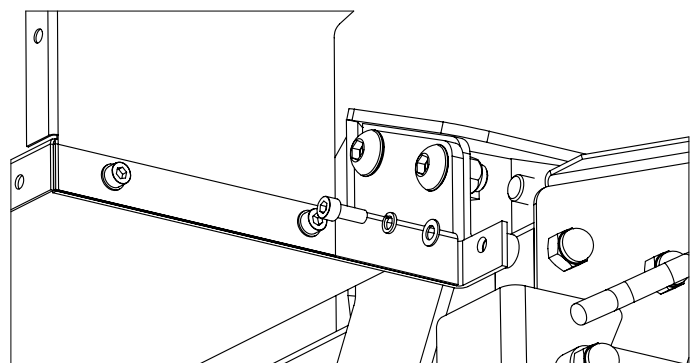


WORK BENCH AND GUARD ASSEMBLY

Attach the work bench to the log rail mounting points using the M6x16 cap head bolts, M6 spring washers, M6 flat washers. On the FM5 and FM8 log splitters there are 4 mounting points, on the FM10 there are 6 mounting points. Note that one of the rear mounting points is for the long rear bracket, which is attached in the next step. Do not fully tighten the bolts until after the next step.



Fit the long rear mounting bracket to the inside face of the long rear edge of the work bench and the rear guard panel to the outside face, using 2 M6x16 cap head bolts, 4 M6 flat washers and 2 M6 nyloc nuts. Then attach the rear bracket to the mounting point on the splitter using an M6x16 cap head bolt, M6 spring washer and M6 flat washer. You should now fully tighten the bolts holding the tray to the log splitter.

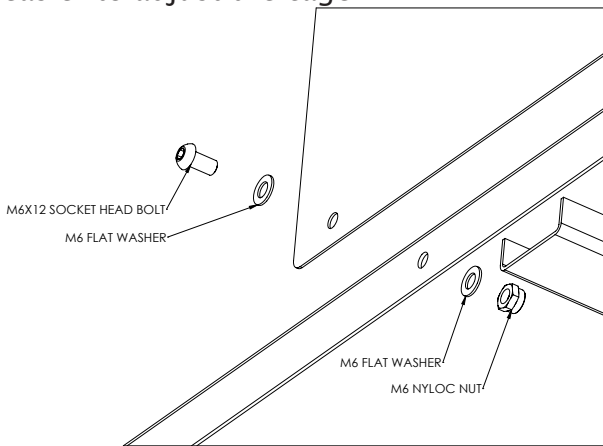




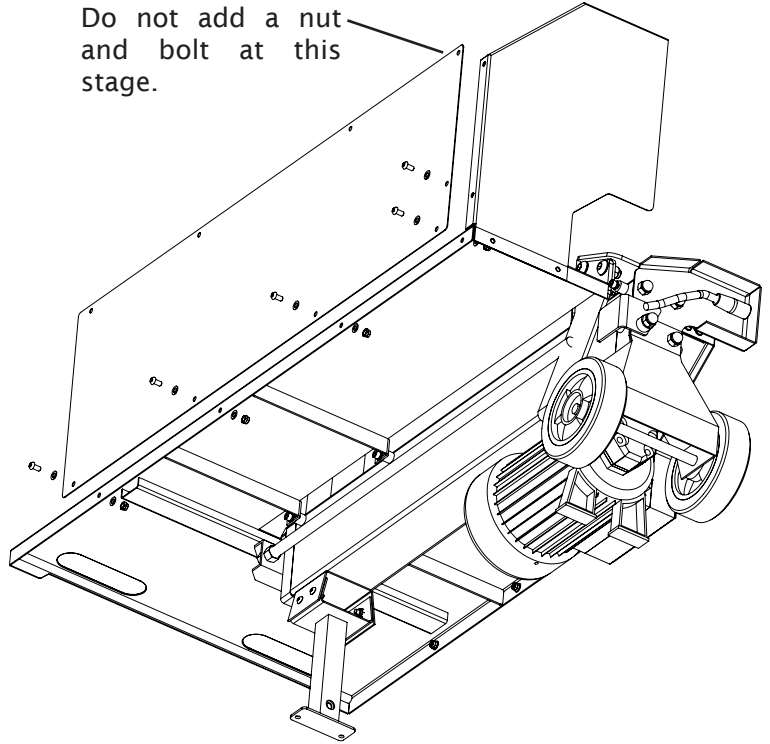
WORK BENCH AND GUARD ASSEMBLY

Attach the longer of the two plain guard panels to the left side of the work bench and the rear cage panel. The bottom rear corner has two closely spaced holes, the top rear corner has a single hole approximately 10mm from the rear edge. Do not fasten the top rear corner at this stage.

Use 5 M6x12 button head bolts, 10 M6 flat washers (1 under each bolt head and 1 under each nut) and 5 M6 nyloc nuts. Leave all nuts and bolts finger tight until the last step, this makes it easier to adjust the cage.

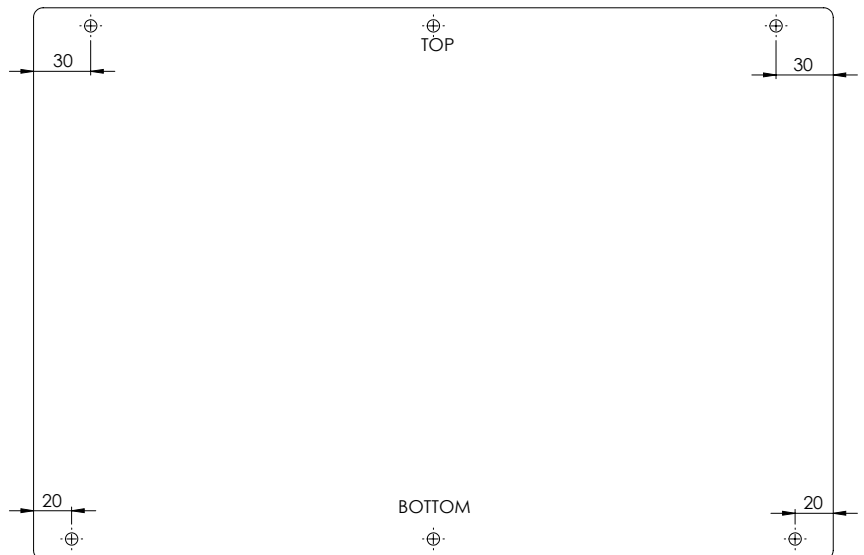
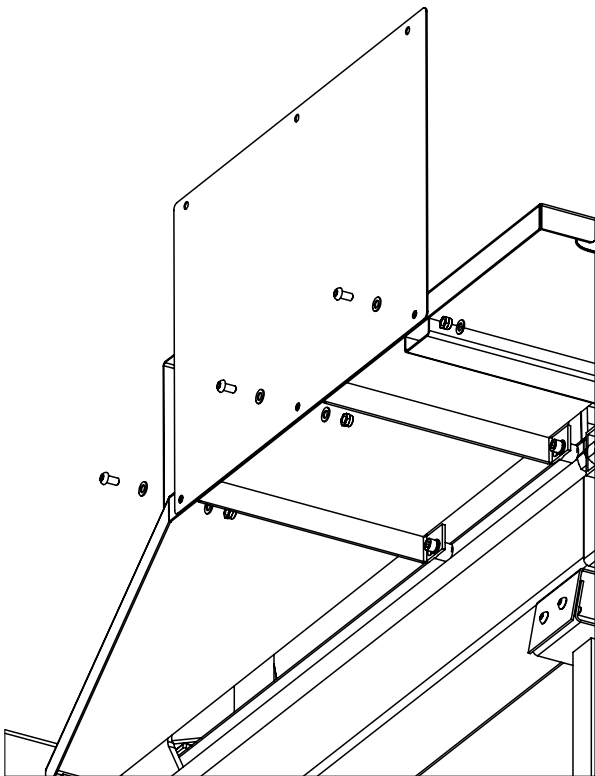


Do not add a nut and bolt at this stage.



Attach the shorter of the two plain guard panels to the right side of the work bench. For the orientation of the panel see the diagram below.

Use 3 M6x12 button head bolts, 6 M6 flat washers (1 under each bolt head and 1 under each nut) and 3 M6 nyloc nuts.

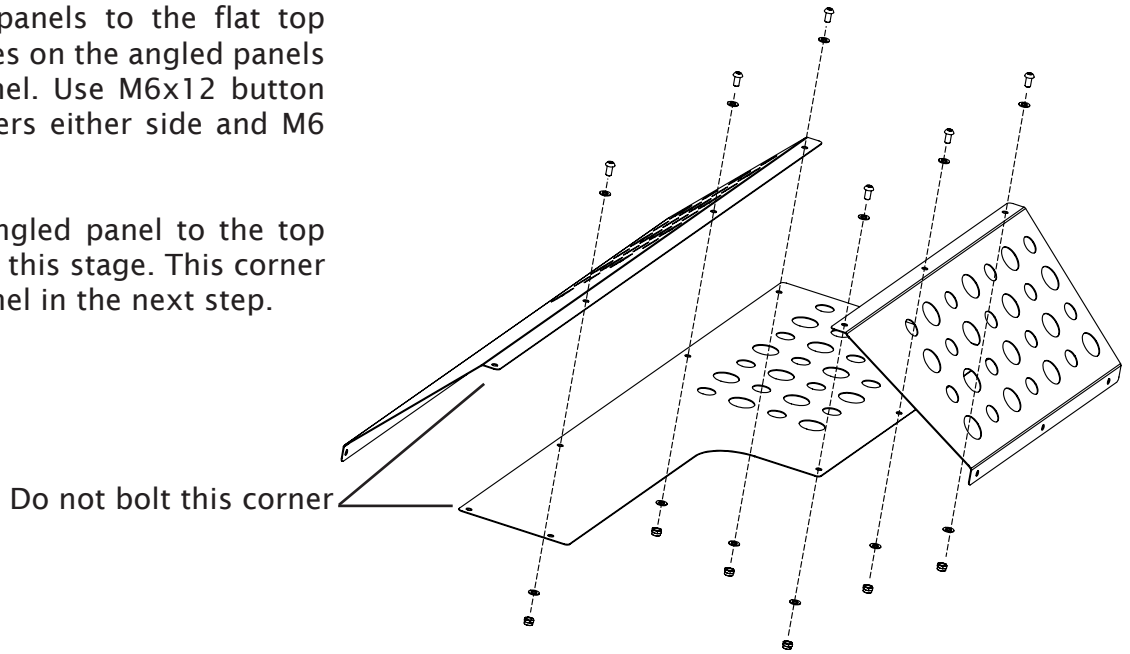




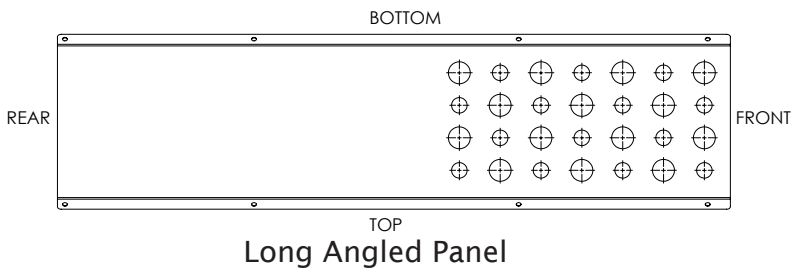
WORK BENCH AND GUARD ASSEMBLY

Attach the two flanged panels to the flat top panel, note that the flanges on the angled panels go on top of the top panel. Use M6x12 button head bolts, M6 flat washers either side and M6 nyloc nuts.

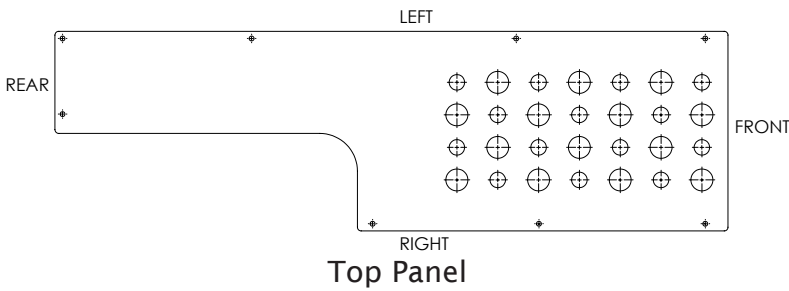
Do not join the longer angled panel to the top panel at it's rear corner at this stage. This corner is secured to the back panel in the next step.



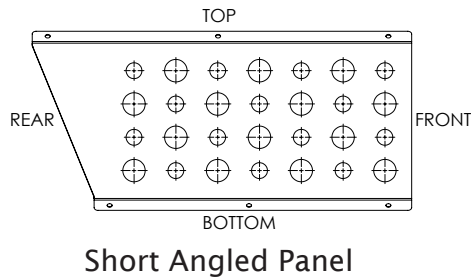
Do not bolt this corner



Long Angled Panel



Top Panel



Short Angled Panel

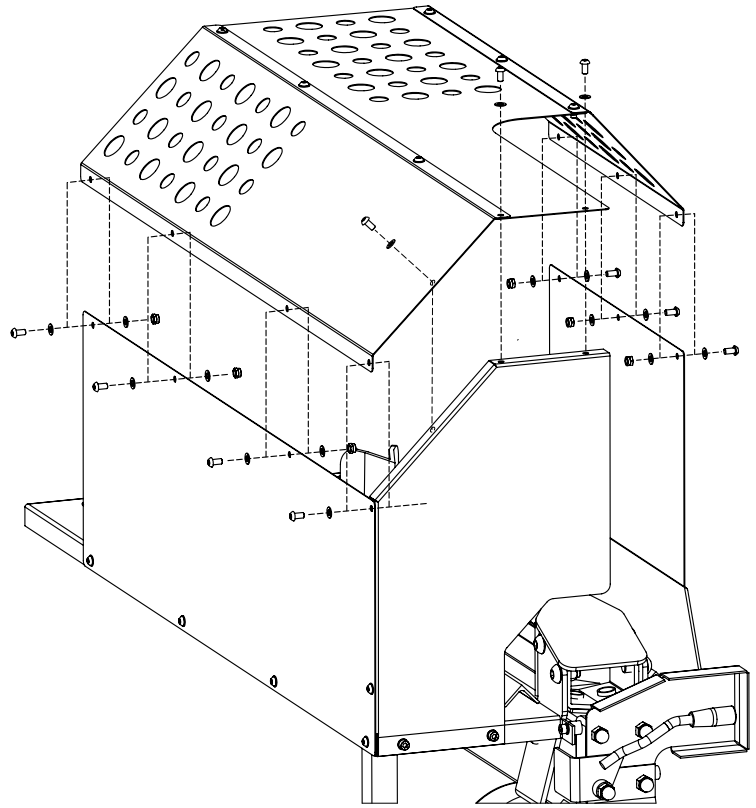


WORK BENCH AND GUARD ASSEMBLY

Fasten the assembled top section to the side panels and the rear panel using 10 M6x12 button head bolts, 20 M6 flat washers one either side of the panels for each bolt and an 10 M6 nyloc nut.

Note that the flanges of the angled panels go outside of the plain side panels.

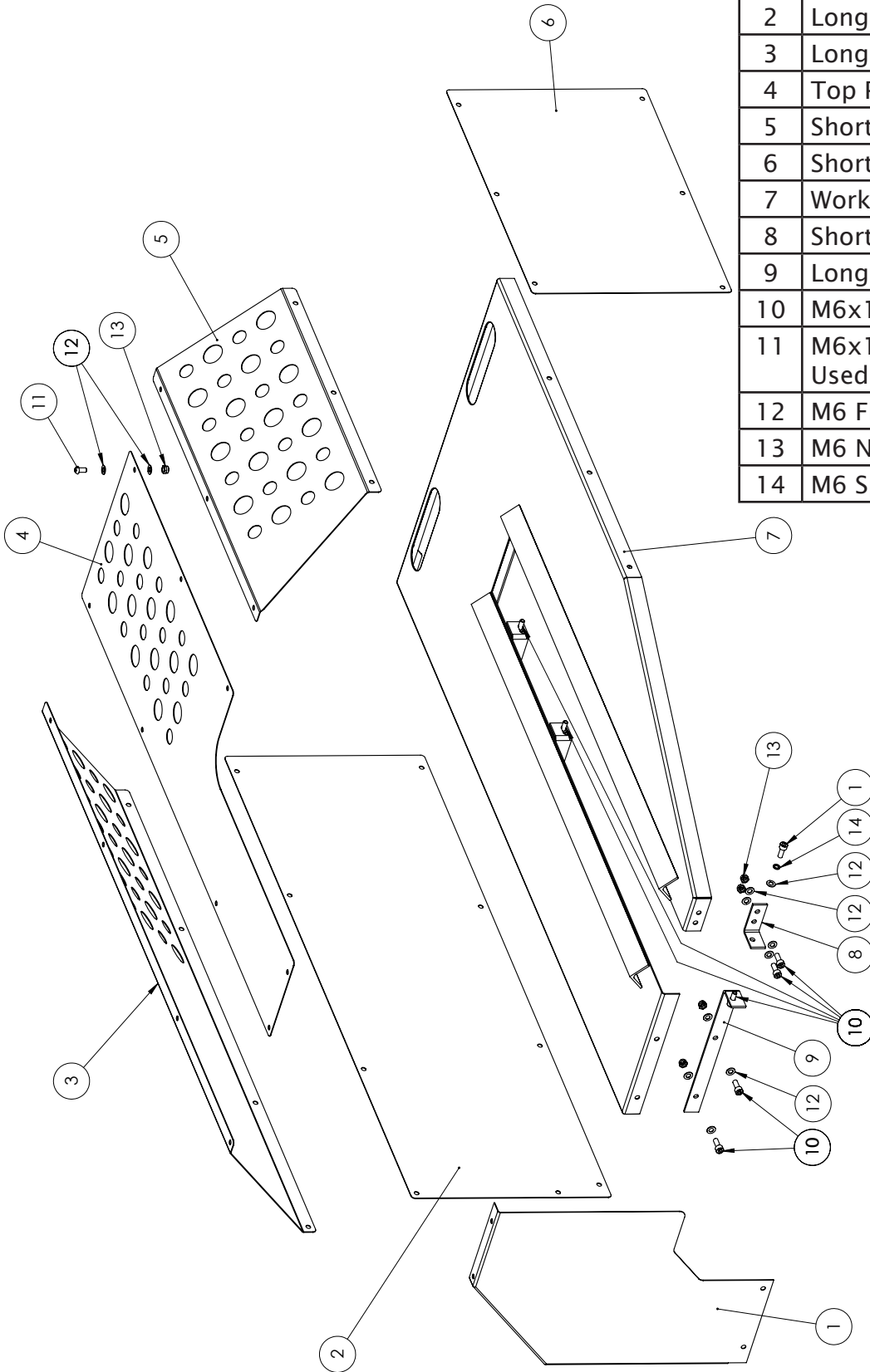
You should now fully tighten all nuts and bolts for the guard and tray.





WORK BENCH AND GUARD ASSEMBLY

No.	Description	FM5 FM8	FM10
1	Rear Guard Panel	1	1
2	Long Plain Panel	1	1
3	Long Angled Panel	1	1
4	Top Panel	1	1
5	Short Angled Panel	1	1
6	Short Plain Panel	1	1
7	Work Bench	1	1
8	Short Rear Bracket	1	1
9	Long Rear Bracket	1	1
10	M6x16 Cap Head Bolts	8	10
11	M6x12 Button Head Bolt Used for all cage bolts	24	24
12	M6 Flat Washer	60	62
13	M6 Nyloc Nut	28	28
14	M6 Spring Washer	4	6





Safety

The work bench and safety guard are designed to be used only with log splitters that are two handed operation. They must not be fitted to log splitters that can be operated one handed.

NEVER attempt to place a hand or hands in the guard when the log splitter is operation.

NEVER attempt to place logs in the guard or remove them from within the guard when the log splitter is in operation.

NEVER allow a second person to assist in placing logs in or removing logs from within the guard whether the log splitter is in operation or not.

Before using the log splitter, check all bolts securing the panels of the guard together, the bolts that secure the cage to the work bench and the bolts that secure the work bench to the log splitter to ensure they are secure.

DO NOT place fingers or other objects through the holes in the top and angled panels, these holes are only to allow you to view the log.

DO NOT attempt to split a log greater than the specified maximum log diameter as this may result in damage to the guard.

DO NOT attempt to load logs onto the log splitter through the front (fixed blade) opening.

ALWAYS load logs through the right hand rear opening.

DO NOT leave split logs lying inside the guard when splitting a subsequent log as these may be forced against the cage and damage it.

Specification

Model	FM5	FM8	FM10
Length (mm)	835	900	1075
Width (mm)	550	550	550
Overall height (mm)	430	430	430
Maximum log diameter (mm)	300	300	400
Weight (kg)	15	16	18